

American Holt Crown Filler Parts

Backrest and Lift Cylinder Components
LOWER

Powered by Servi-Tech with over 50 years experience.

REFERENCE GUIDE

***MRO strategies for OEM
parts and assemblies***

781-440-9993
sales@americanholt.com
www.americanholt.com



American Holt is a full-service engineering firm focused on the reverse engineering of high-usage machinery components. Founded in 1995, American Holt manufactures aftermarket replacement parts for machines used by the beverage, food processing, packaging, and paper converting industries. We provide engineered savings to customers around the world.

CONTACT:

American Holt
203 Carnegie Row
Norwood, MA 02062
781-440-9993
sales@americanholt.com

HOURS:

Monday-Friday
8:00am to 5:00pm EST

SALES:

Tom St. Lawrence, President
Charlene Butts, Sales Manager

NOTICE:

All parts offered by American Holt are manufactured by or for American Holt and not by or for the Original Equipment Manufacturer. Part numbers shown that are those of the Original Equipment Manufacturer, if any, are used for reference purposes only. American Holt is an independent supplier of quality replacement parts having no affiliation with any Original Equipment Manufacturer. All prices are subject to change without notice.

Copyright ©2025 American Holt Corp. All rights reserved.

Table of Contents

STI Quick Change Backrest



Backrest Assembly for Cans (40v Filler)	2
Backrest Assembly for Cans (72v, 100v, 130v Filler)	4
Lift Cylinder Assembly for Cans	6
Eccentric Trip Lever Kit.....	8
Lift Cylinder Assembly for Bottles	9

** - Item made-to-order N/A - Item is not currently offered by American Holt*

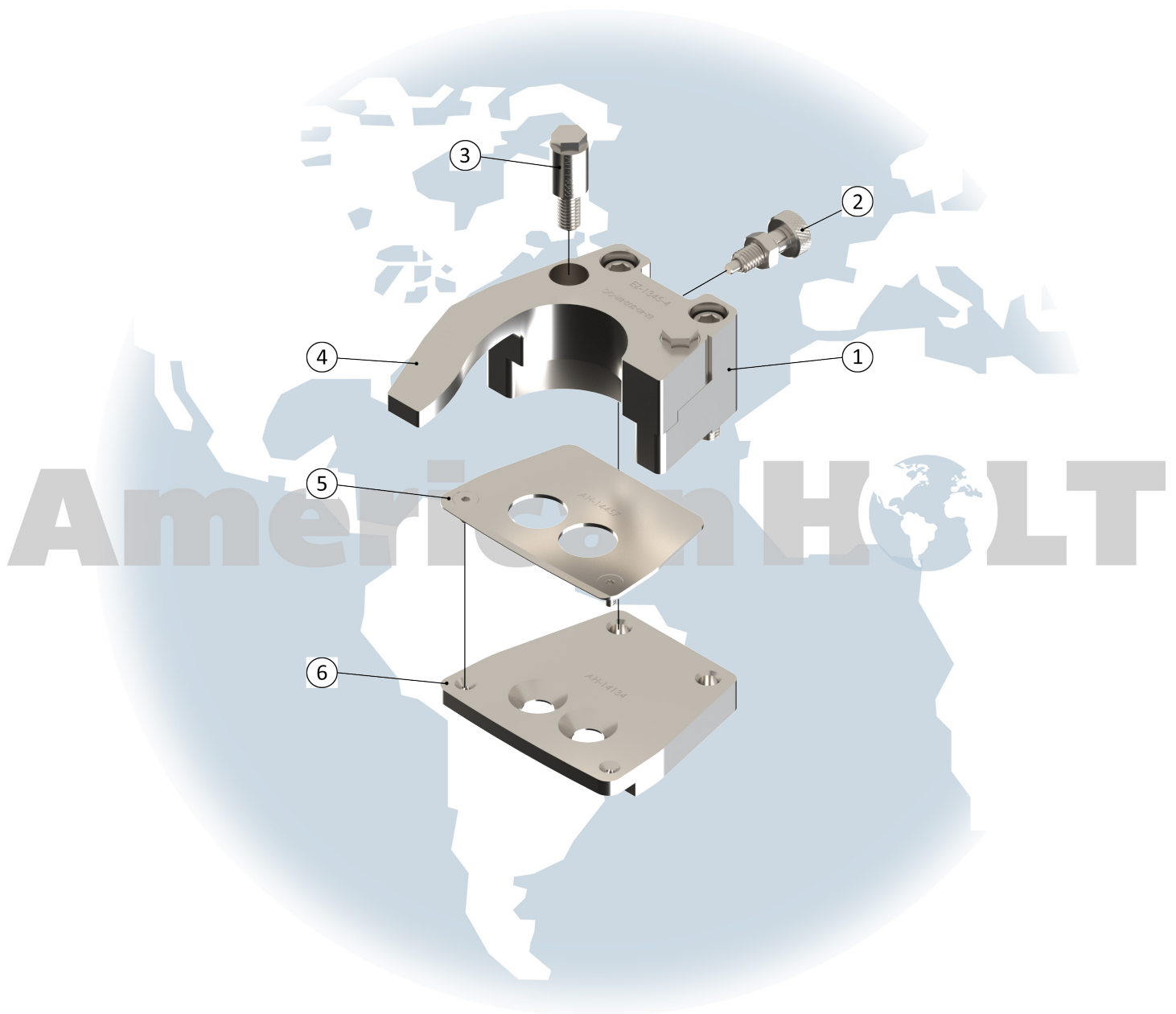
FOR MORE INFORMATION, CONTACT AMERICAN HOLT AT:

781-440-9993 • sales@americanholt.com • www.americanholt.com

STI Quick Change Backrest

AFTER MARKET PARTS FOR:

Backrest Assembly for Cans (40v Filler)



NOTICE: All parts offered by American Holt are manufactured by or for American Holt and not by or for the Original Equipment Manufacturer. Part numbers shown that are those of the Original Equipment Manufacturer, if any, are used for reference purposes only. American Holt is an independent supplier of quality replacement parts having no affiliation with any Original Equipment Manufacturer. All prices are subject to change without notice. Copyright ©2024 American Holt Corp. All rights reserved.

Quick-Change Backrest Assembly for 40 Valve Can Filler

Assembly Number: EZ-1345-40-CC

ITEM NO.	PART NO.	DESCRIPTION	QTY
1	EZ-1345-4	Stainless Steel Backrest Support (INCLUDES HARDWARE)	1
2	EZ-1309-QC	Quick Change Spring Locking Pin with Nut	1
3	EZ-1345-5	Stainless Steel Backrest Alignment Post	2
4	EZ-40-202-BR-QC (SHOWN)	Stainless Steel Quick Change Backrest for 202 Body Can	1
	EZ-40-204-BR-QC	Stainless Steel Quick Change Backrest for 204 Body Can	
	EZ-40-211-BR-QC	Stainless Steel Quick Change Backrest for 211 Body Can	
	EZ-40-202-BR-P-QC	Plastic Quick Change Backrest for 202 Body Can	
	EZ-40-204-BR-P-QC	Plastic Quick Change Backrest for 204 Body Can	
	EZ-40-211-BR-P-QC	Plastic Quick Change Backrest for 211 Body Can	
5	EZ-1345-2	Quick Change Wear Plate	1
6	EZ-1345-1	Quick Change Can Platform	1

* Note: American Holt quick-change backrest parts fit American Holt quick-change backrest assembly only

Standard Backrest Assembly for 40 Valve Can Filler

Assembly Number: EZ-1345-40 (OEM 438208)

(not pictured)

ITEM NO.	PART NO.	DESCRIPTION	OEM PART NO.	QTY
	EZ-1345	Standard Can Platform	438209	1
	EZ-1344-A	Standard Platform Wear Plate		1
	EZ-1306	Platform Mounting Screw 0.50X13X1.00	518367	2
		Platform Bolts		2
	EZ-40-202-P	Plastic Standard Can Bracket for 202 Body Can		1
	EZ-40-204-P	Plastic Standard Can Bracket for 204 Body Can		
	EZ-40-211-P	Plastic Standard Can Bracket for 211 Body Can		

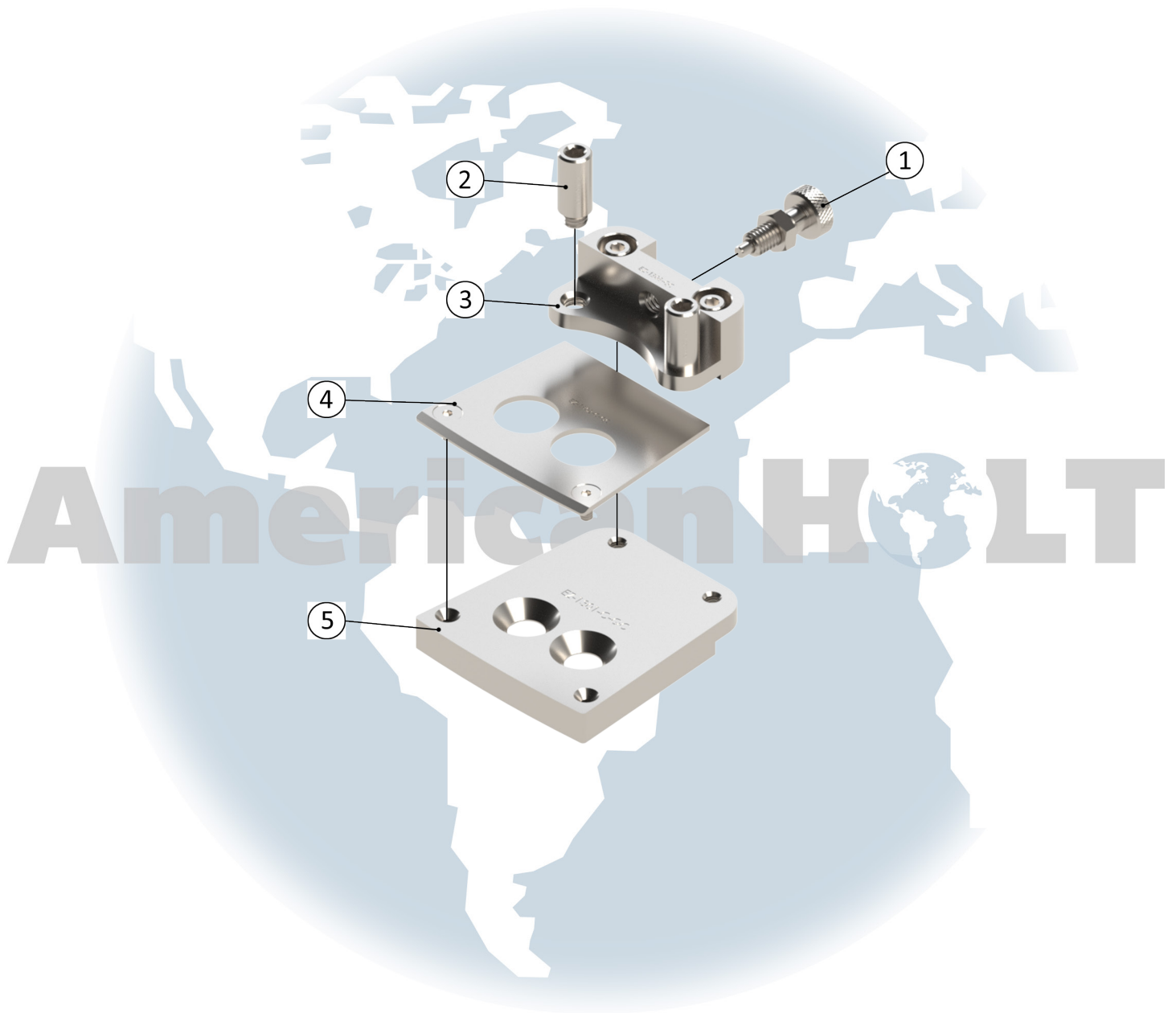
* - Item made-to-order N/A - Item is not currently offered by American Holt

FOR MORE INFORMATION, CONTACT AMERICAN HOLT AT:
 781-440-9993 • sales@americanholt.com • www.americanholt.com

STI Quick Change Backrest

AFTER MARKET PARTS FOR:

Backrest Assembly for Cans (72v, 100v, 130v Filler)



Having no affiliation with any Original Equipment Manufacturer. All prices are subject to change without notice. Copyright ©2024 American Holt Corp. All rights reserved.

Quick-Change Backrest Assembly for 72v/100v/130v Can Fillers

Assembly Number: EZ-1300-72/100/130-CC

ITEM NO.	PART NO.	DESCRIPTION	QTY
1	EZ-1309-QC	Quick Change Spring Locking Pin with Nut	1
2	EZ-1307-QC	Quick Change Alignment Post	2
3	EZ-1308-QC	Quick Change Back Rest Support (INCLUDES HARDWARE)	1
4	EZ-1302-C-QC	Quick Change Wear Plate (INCLUDES HARDWARE)	1
5	EZ-1301-C-QC	Quick Change Can Platform	1
	EZ-202-QC (NOT SHOWN)	Plastic Quick Change Can Backrest for 202 Body Can	1
	EZ-204-QC (NOT SHOWN)	Plastic Quick Change Can Backrest for 204 Body Can	
	EZ-211-QC (NOT SHOWN)	Plastic Quick Change Can Backrest for 211 Body Can	

* Note: American Holt quick-change backrest parts fit American Holt quick-change backrest assembly only *

Standard Backrest Assembly for 72v/100v/130v Can Fillers (not pictured)

ITEM NO.	PART NO.	DESCRIPTION	OEM PART NO.	QTY
	EZ-1301-C	Standard Can Platform	740168	1
	EZ-1302	Standard Platform Wear Plate	740167	1
	EZ-1305	Platform Bolts	518367	2
		Extended Bracket Screws		2
	EZ-202	Standard Can Backrest for 202 Body Can		1
	EZ-204	Standard Can Backrest for 204 Body Can		
	EZ-211	Standard Can Backrest for 211 Body Can		

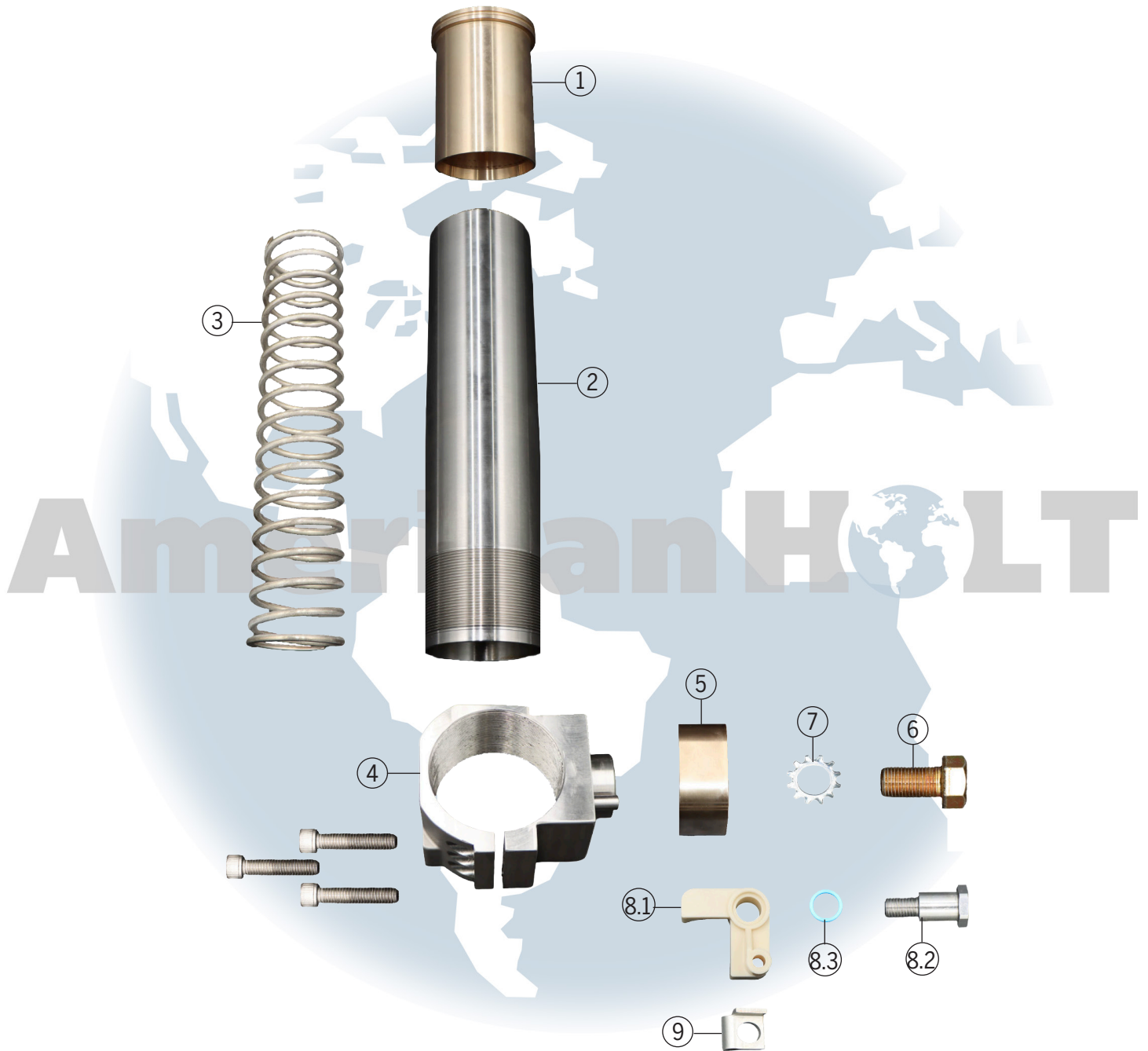
* - Item made-to-order N/A - Item is not currently offered by American Holt

FOR MORE INFORMATION, CONTACT AMERICAN HOLT AT:
 781-440-9993 • sales@americanholt.com • www.americanholt.com

STI Quick Change Backrest

AFTER MARKET PARTS FOR:

Lift Cylinder Assembly for Cans



NOTICE: All parts offered by American Holt are manufactured by or for American Holt and not by or for the Original Equipment Manufacturer. Part numbers shown that are those of the Original Equipment Manufacturer, if any, are used for reference purposes only. American Holt is an independent supplier of quality replacement parts having no affiliation with any Original Equipment Manufacturer. All prices are subject to change without notice. Copyright ©2024 American Holt Corp. All rights reserved.

IN-STOCK AND READY TO SHIP.

Lift Cylinder Assembly for Cans

ITEM NO.	PART NO.	DESCRIPTION	OEM PART NO.	QTY
1	EZ-1319 (SHOWN)	Lift Cylinder Bushing	718562 A34148	1
	EZ-1319-C-O	Oversized Lift Cylinder Bushing		
2	EZ-1305-A (SHOWN)	Lift Cylinder and Plug Assembly for 40v/72v Filler	728675 A34184	1
	EZ-1305-C	Lift Cylinder and Plug Assembly for 100v/130v Filler	740091 A34185	
	CF-7220 (NOT SHOWN)	Plastic Stop Block		1
3	EZ-1327-1	Progressive Lift Cylinder Spring	491268 A50036	1
4	EZ-5156	Lower End Housing Assembly	485156	1
4.1	N/A	Lower End Housing	485158	1
4.2	N/A	Lower End Housing Clamping Bolt	41608-S	1
4.3	N/A	Lower End Housing Washer	49642-S	1
4.4	N/A	Lower End Housing Jack Bolt	724363	1
5	CF-3447	Bronze Cam Block	453447 BEV407	1
6	CF-6577	Cam Block Hex Head Cap Screw	526577 A50035	1
7	CF-0765	External Tooth Lock Washer	500765-S	1
8	EZ-1401-CC	Standard Can Pressure Adjusting Trip Lever Kit		1
8.1	CF-985-1 (SIZE OPTIONS BELOW)	Standard White Lift Cylinder Trip Block Lever	452985	1
8.2	CF-271	Shoulder Bolt	453271	1
8.3	OR-SQ-210	Squaring O-Ring	504130	1
8.4	CF-1325 (NOT SHOWN)	Hi-Collar Lock Washer	49645	1
9	EZ-1400-165	Trip Block Stop - Stainless Steel	414165	1

Special Sized Trip Block Levers

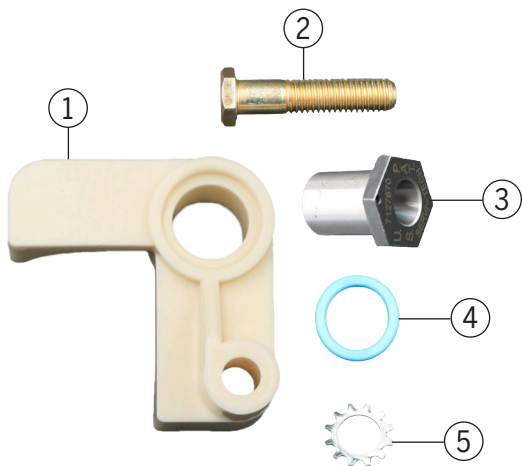
PART NO.	DESCRIPTION	OEM PART NO.
CF-985-1+10	Green Lift Cylinder Trip Block Lever (+0.010")	452985-P010
CF-985-1+20	Brown Lift Cylinder Trip Block Lever (+0.020")	452985-P020
CF-985-1+30	Red Lift Cylinder Trip Block Lever (+0.030")	
CF-985-1-10	Black Lift Cylinder Trip Block Lever (-0.010")	452985-M010
CF-985-1-20	Orange Lift Cylinder Trip Block Lever (-0.020")	452985-M020
CF-985-1-30	Yellow Lift Cylinder Trip Block Lever (-0.030")	
EZ-211	Standard Can Backrest for 211 Body Can	

* - Item made-to-order N/A - Item is not currently offered by American Holt

FOR MORE INFORMATION, CONTACT AMERICAN HOLT AT:
781-440-9993 • sales@americanholt.com • www.americanholt.com

STI Quick Change Backrest

Eccentric Can Pressure Adjusting Kit EZ-1400-CC OPTIONAL Eccentric Trip Lever Kit



ITEM NO.	PART NO.	DESCRIPTION	QTY
1	CF-985-1	LC Holding Trip Block	1
2	EZ-2250	Hex Head Bolt	1
3	EZ-271-1	Eccentric Nut	1
4	OR-SQ-210	Square O-Ring	1
5	CF-1328	Star Lock Washer	1
	EZ-1400-2 (NOT SHOWN)	Pin-Height Gage for Eccentric Trip Lever Kit	1

* - Item made-to-order N/A - Item is not currently offered by American Holt

FOR MORE INFORMATION, CONTACT AMERICAN HOLT AT:

781-440-9993 • sales@americanholt.com • www.americanholt.com

NOTICE: All parts offered by American Holt are manufactured by or for American Holt and not by or for the Original Equipment Manufacturer. Part numbers shown that are those of the Original Equipment Manufacturer, if any, are used for reference purposes only. American Holt is an independent supplier of quality replacement parts having no affiliation with any Original Equipment Manufacturer. All prices are subject to change without notice. Copyright ©2024 American Holt Corp. All rights reserved.

IN-STOCK AND READY TO SHIP.

Lift Cylinder Assembly for Bottles (not pictured)

ITEM NO.	PART NO.	DESCRIPTION	OEM PART NO.	QTY.
	Contact Customer Service	Lift Cylinder Bushing Assembly		1
		Oversized Lift Cylinder Bushing		
	CF-5736-B	Lift Cylinder and Plug Assembly		1
	CF-7222-B	Plastic Stop Block with Bolts		1
		Brone Air Lift Tube	451022 GDF209	1
	EZ-7346	Lower End Housing with Clamping Bolts, Jack Bolt and Washer		1
	CF-8025-B	Bronze Cam Block	408869	1
	CF-6577	Cam Block Bolt	526577 A50035	1
	CF-0765	External Tooth Lock Washer	500765-S	1

* - Item made-to-order N/A - Item is not currently offered by American Holt

FOR MORE INFORMATION, CONTACT AMERICAN HOLT AT:
781-440-9993 • sales@americanholt.com • www.americanholt.com

